

Vision: To become the first-class general use frequency inverter preferred supplier

Mission: Committed to provide value-added products and services for rapid and change-able customers

Core Values: Respect and Trust, Pragmatic Innovation, Respect Talented Person, Win-win Cooperation



■ **Pre-sale Service:**

Technical scheme analysis, frequency converter model selection; Can customize product and software according to customer requirements

■ **Selling Service:**

Deliver in time, Technical Training, Installation and Debugging

■ **After-sale Service:**

Use effect tracking, Breakdown maintenance, Software upgrades

Selection Guide



「www.szeasydrive.com」



Learn more visiting the official website:

www.szeasydrive.com



Shenzhen Easydrive Electric Co., Ltd

Company Profile

Shenzhen Easydrive Electric Co.,Ltd, founded in 2004, is Shenzhen Double Soft Certification Enterprise ,National High and New Technology Enterprise, and “China Top 10 Brand “in low voltage frequency inverter industry.

Vision: To become the first-class general use frequency inverter preferred supplier

Mission: Committed to provide value-added products and services for rapid and changeable customers.

Core Values: Respect and Trust, Pragmatic Innovation, and Win-win Cooperation

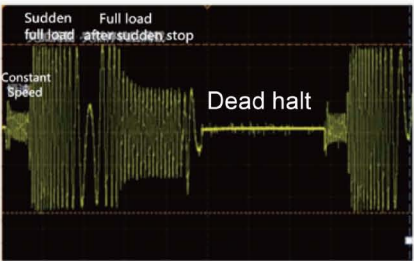
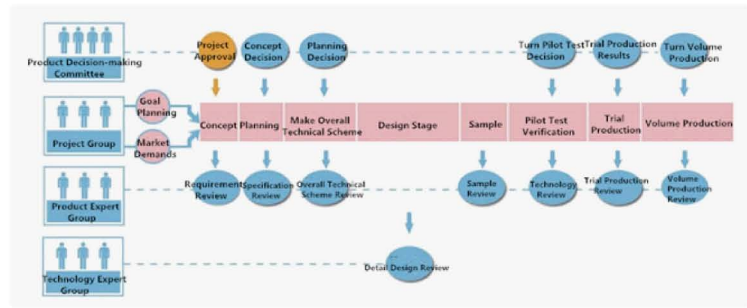
Our products are widely used in machine tools, wire and cable, plastics, printing, packaging, textiles, electronics, building materials, metallurgy, coal, municipal and others applications. The company set up more than 20 marketing offices in the country, the products are exported to more than 50 countries and regions. And having experience in foreign trade more than 12 years.

Enterprise honor



Strong Development Ability

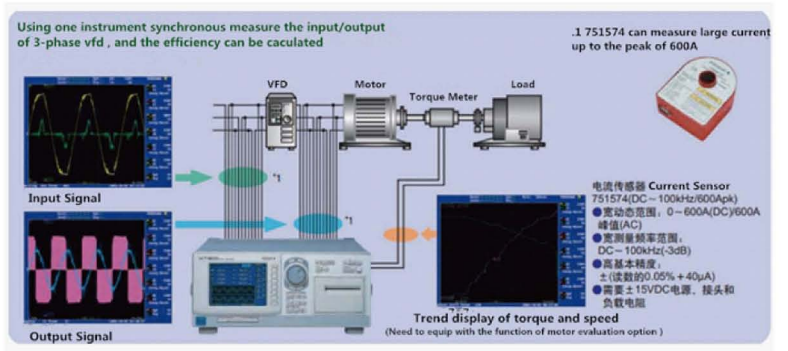
Easydrive is a national high-tech enterprises that technical innovation is the life. We adopt advance IPD development process to fully implement strict product planning and test validation from product demand entry to market launch, To ensure rapid, accurate and reliable convert customer requirements into the product.



All-around Technical Testing And Verification Based on Site

Score technology

- Voltage vector, Current vector control algorithm
- Flux observer technology, Weak magnetic algorithm
- Accurate parameter self-tuning technology
- Auto Current Limiting, Current control technology



Motor back to back testing Platform



Motor back to back testing Platform

Motor Performance Test Platform



Power Analyzer



Electric Stress Test Instrument



Environmental Chambers

Environment Test Platform



The High Frequency Noise Simulating Generator



ESD Generator



Automatic Lightning Surge Tester



Intelligent Group Pulse Generator

EMC Test Platform

Marketing Network

Easydrive marketing network is complete which set up more than 20 marketing offices around the country, and the products are exported to more than 50 countries and regions. There are stock in central city.Products are widely used in machine tools, wire and cable, plastics, printing, packaging, textiles, electronics, building materials, metallurgy, coal, municipal and others applications.

Widely application



Marketing Network



The Advantage Of The Supply Chain

Easydrive electric always proceed with strict quality management ,Optimizing the production process diligently, applying advanced ERP management system to integrate orders、procurement、Production and coordination of logistics, to ensure the delivery of accurate、timely and reliable. At present it has formed annual production of 150,000 inverters with excellent manufacture supply capacity.

The advantage of the supply chain



GT200 High performance system type frequency inverter



Power Range

- GT200 5.5KW—280KW/AC380V~440V

Product Feature

- Excellent performance
Speed Stable Precision: $\pm 0.5\%$ rated synchronous speed(SVC)
Speed Adjustment Range: 1:100(SVC)
Torque Response: $<20\text{ms}$ (SVC)
Heavy Load Overload Capacity: 110% rated stable operation, 150% rated load 1min, 180% rated load 3s
Low frequency large torque, under the open-loop vector model, can realise 0.5Hz loading (150% rated load) stable operation.
The drive can keep enough torque output capacity and no trip to run when there is instant mutation load.
Auto Current Limiting: Motor current can be controlled at a certain level does not affect the output torque.
Can accurately identify the motor parameters, realise high performance vector control.
Can realise static self-learning, dynamic self-learning, and adapt to different working condition requirement.
Can realise motor parameters accurate setting under the condition of long cable.
- Rich and Comprehensive Application Function
Flexible Multi-stage V/F Curve; Multi-stage speed Control; Sample PLC application; Standard RS485 Communication
The Selection of Frequency Source And Command Source; Frequency Binding and Switching; Frequency master and auxiliary;
Pulse frequency input and output
Built-in PI control; Preset for closed-loop; Zero frequency difference ;
Swing frequency operation; Fixed length control; Speed tracking; Droop control; Instant stop non-stop; Automatic energy-saving operation; Multiple protection and overload warning
Built-in braking unit below 22kw; Strong Expandability
- Excellent adaptability
Working voltage range: Rated voltage 380-440V; through the automatic voltage regulation technology (AVR), the long-term low Analog output terminal: 2-10V/ 0-10V/4-20mA/0-20mA optional, output physical quantity optional, convenient for connecting external instrument.
Operating time automatically accumulated: set the time to issue instructions to facilitate the maintenance of equipment maintenance.
User password settings: the user's parameters can be kept secret to prevent unauthorized personnel modify parameters.
Built in braking unit: Below 22kw no external braking unit needed, reduce the cost of the customer system.
Strong Expandability : Reserved 2pcs Expansion card position, can connect to I/O Expansion card, communication expansion card and other process expansion card (Such as air compressor adapter card, water-supply card, plastic injection card and etc), or customized cards according to user's demand.
Dustproof design: Comprehensive anti-corrosion paint spraying protection, independent air duct design, dust accessories optional to increase overall defensive capabilities, to meet the long-term reliable operation of high humidity or excessive dust occasions.
Easily replaceable fan: Don't need to disassemble to realize quick replacement of fan, adapt to the special environment of wind machine, adapt to special occasions which need regular cleaning air duct debris.

GT200 High performance system type frequency inverter

Product Application

- Be applied to petrochemical industry, papermaking, plastics machines, ceramic machines, textile machines, printing and dyeing machines, packaging machines, cable-making machines, Mining machinery, petrochemical, Municipal project, water treatment, environment equipment, fans and pump and etc many kinds of industries.

GT200 control loop CN3 terminal function explanation

Category	Terminal label	Name	Terminal function explanation	Specification
Communication	485+	RS485 communication port	RS485 differential signal Positive end	Standard RS485 Communication port Use twisted pair or shielded wire
	485-		RS485 differential signal Negative end	
Multifunctional output terminal	DO1	Open collector output terminal	Programmable definition for a variety of functions of the output terminal, see the terminal function parameters F6.11, F6.12 output terminal function, can be extended DO3 open collector output terminal	Optical coupler isolated output. Work Voltage range: 9-30V; Maximum output current: 50mA
	DO2	Open collector pulse output terminal		Work Voltage range: 9-30V; Maximum output current: 50mA Maximum output frequency: 50KHz (Due to F6.20)
Relay output terminal	TA TB TC	Programmable relay terminal output	Normal: TA-TB often closed; TA-TC often open; Relay output terminal Programmable defined as a variety of functions of the relay output terminals, can be extended TB2 TC2 TA2 (see the parameters of the F6.13 function description)	Contact rating NO: 3A 24VDC; 5A 250VAC NC: 3A 24VDC; 3A 250VAC
Analog input	AI1/AI2	Analog input AI2	Accept analog current, voltage input, can be selected by the functional code (Reference: GND) can be extended to AI3, support PT100/PT1000 differential input	Input voltage range: 0-10V (Input impedance: 100KΩ) Input current range: 0-20mA (Input impedance: 165Ω) Resolution: 1/1000
Analog output	AO	Analog output	To provide analog voltage, current output, through the functional code selection, can be corresponding to 12 kinds of physical quantities, the factory default output frequency, can be extended AO2 (see parameters F6.24/F6.25 function description)	Voltage output range: 0-10V Voltage output range: 0-20mA
Multifunctional input terminal	DI1	Multifunctional input terminal 1	Programmable logic is defined as a variety of functions of the switch input terminals, see the sixth chapter terminal function parameters (input and output) input terminal function. (common: PLC) (see parameter function F6.00-F6.04 description) can be extended DI6-DI10	Optical coupler isolated output Input impedance: 3.3KΩ Maximum input frequency: 200Hz Input voltage range: DC9-30V
	DI2	Multifunctional input terminal 2		
	DI3	Multifunctional input terminal 3		
	DI4	Multifunctional input terminal 4		
	DI5	Multifunctional input terminal 5		
Power Supply	10V	+10V power supply	External supply 10V power supply	Maximum output current: 50mA
	GND	+10V power supply common terminal	Reference ground for analog signal and 10V power supply	COM and GND are internal separated by each other.
	COM	+24V power supply common terminal	Digital signal input and output common terminal	Maximum output current: 200mA
	+24V	+24V power supply	Digital signal power supply	Ex factory short connection with 24V
	PLC	Multifunctional input common terminal	DI1-DI5 common terminal	Ex factory short connection with COM
	CME	digit output common terminal	multifunctional output terminal DO1 common terminal	

Overall dimension							
Series	Power	Overall dimension (Unit: MM)			Installation dimension (Unit: MM)		Remark
	KW	W	H	D	W1	H1	
GT200	5.5-7.5	150	259	183	138	248	5.5
	11-15	205	322	219	188	305	6.5
	18.5-22	235	370	237	218	350	7.0
	30-37	305	490	278	200	470	10
	45-75	320	560	308	197	535	10
	90-132	355	678	320	240	659	11
	160-185	450	900	378	300	875	12
	200-220	480	1070	424			
	250-280	520	1300	438			

GT200 High performance system type frequency inverter

Product technicalspecifications

Item		Description
Input	Rated voltage/ Frequency	Single-phase 200V-240V , three-phase,380V-440Vac;50Hz/60Hz
	Allowed voltage range	Voltage:200V(-15%)~240V (+10%) 380v(-15%)~440v (+10%) ;Voltage unbalance rate:<3%;Frequency:±5%
Output	Rated voltage(A)	0~input voltage
	Frequency	0Hz~550Hz
	Overload capacity	150% rated current for 60s
Main control function	Control mode	Sensorless vector control (SVC),V/F
	Range of speed regulation	1:100
	starting torque	150% rated torque when 0.5Hz
	Speed control accuracy	≤±5% rated synchronous speed
	Frequency accuracy	Digital set :max. frequency×±0.01% Analog set: max.frequency×±0.2%
	Frequency resolution	Digital set :1Hz ;Analog set: max. frequency×0.1%
	Torque rise	Auto torque ascension,manual torque ascension 0.1%~30.0%
	V/F curve	Four ways:1 kind of user set V/F curve way , 3 kinds of drop torque characteristic curve way(2.0 times power , 1.7 times power , 1.2 times power
	Acceleration/deceleration curve	Three ways:line acceleration/deceleration 、 S curve acceleration/deceleration 、 Auto acceleration/deceleration four acceleration/deceleration time , with the unit of time (minute/second) optional ,max.time set 60 hours
	DC braking	DC braking start frequency:0.00Hz~60.00Hz;braking time:0.0~30.0s;braking current:G type 0.0~100.0%
	Jogging	Jog frequency range:0.00Hz~50.0Hz
	Multi-speed operating	It can be realized by interior-PLC or control terminal
	Built-in PID	Be convenient to make closed-loop control system
	Auto energy-saving running	According to load condition, V/F curve can be optimized automatically to get the aim of energy-saving running.
	Auto voltage adjustment	when rhe voltage of network changes,the output voltage can be automatically kept constant
Customized function	Auto current limiting	During the operation, the current is automatically limited to prevent frequent flow to falut trip
	Auto carrier adjustment	According to the load characteristics ,automatically adjust the carrier frequency
	Textile swing frequency	Textile swing frequency control,it can realize the function of fixed and variable swing frequency
	Fixed length control	Length reached stop function
	Sagging function	Applicable to multiple inverters drive one load
Running function	Instant stop/non-stop control	when power-supply off instantly,it can realize keep running through control bus voltage
	Binding function	Running command channel and frequency given channel can be binded and change at same time
	Running command channel	Operation panel,control terminal and communication port , can be switched through many ways
	Frequency given channel	Digial given, keypad potentiometer,analog voltage given,analog current given, pulse given,communication port given,can be switched through many ways
	Auxiliary frequency given channel	Realize flexible auxiliary frequency fine-turing and frequency combination operation
Operating panel	Pulse output terminal	0~50KHz pulse square wave signal output,can realize output setting frequency and output frequency ect.
	Analog output terminal	2 ways analog output,0~10v , 0~20mA to get output of physical quantity such as setting frequency and output frequency
	LED display	can display 20 kinds of parameters such as setting frequency,output frequency,output voltage,output current and so on
Environment	Key Locked and function choose	Define the function scope of part of the keys,in case of mistake operation
	protection function	Phase-loss protection(optional),over current protection,over voltage protection,under voltage protection,over heat protection,over load protection
	Service location	Indoor,not suffer from sun,dust,corrosive gas,oil fog,steam and so on
	Altitude	Less than 1000m (derating at higher than 1000m)
	Environment temperature	-10℃~+40℃
Structure	Humidity	Less than 90%RH, no condensation
	Vibration	Less than 5.9m/s2 (0.6M)
	Storage temperature	-20℃~+60℃
	Protection class	IP20 (In service state or keyboard state.)
	Cooling way	Air-blast cooling
	Installation Way	GT100: Wall-hanging 、 Lateral installation 、 Guide rail installation,GT200: Wall-hanging,Cabinet 、 Through the wall installation

GT210 High-performance universal frequency inverter



Power Range

- GT210 5.5KW-280KW/AC380V~440V

Product Characteristics

- Excellent performance
Adopt Real-time control technology of Flux current and torque current,0.5HZ can provide 150% torque output ability.;
When the load occurs the instant mutation ,through auto current limiting technology,it can keep enough ability of torque output ,and ensure equipment not trip and continue running.;
The motor current can be controlled within current protection point without affecting torque output. It can protect equipment safety and avoiding current alert for the reason of sudden load and interference.
Through high-efficiency current close-loop control,realize fast starting with maximum current. And By dynamically controlling internal DC bus voltage, realize high efficiency fast stop braking and ensure not trip and continue running.;
Using self-learning technology of acceleration and deceleration speed, adapt to various loads and select the acceleration time
- Rich and Comprehensive Application Function
Flexible Multi-stage V/F Curve;Multi-stage speed Control;Sample PLC application;Standard RS485 Communication
The Selection of Frequency Source And Command Source;Frequency Binding and Switching;Frequency master and auxiliary;Pulse frequency input and output
Built-in PI control;Preset for closed-loop;Zero frequency difference ;
Swing frequency operation;Fixed length control;Speed tracking;Droop control;Instant stop non-stop;Automatic energy-saving operation;Multiple protection and overload warning
Built-in braking unit below 22kw
- Excellent adaptability
Working voltage range: Rated voltage 380-440V; through the automatic voltage regulation technology (AVR), the long-term low voltage through the modulation technology, to ensure the load capacity under wide operating voltage range.;
Providing different ground selection for different grounding systems
Special anti surge design;18.5kw and above models can be selected to match built-in DC reactor
Adjusting the carrier frequency automatically according to the environmental humidity
Comprehensive anti-corrosion paint spraying protection,independent air duct design,dust accessories optional to increase overall defensive capabilities.
Keyboard out: To achieve a reliable external guide without the keyboard bracket.

GT210 High-performance universal frequency inverter

Product Application

- Be applied to petrochemical industry, papermaking, plastics machines, ceramic machines, textile machines, printing and dyeing machines, packaging machines, cable-making machines, Mining machinery, petrochemical, Municipal project, water treatment, environment equipment, fans and pump and etc many kinds of industries.

Control circuit terminal array show as right picture

Category	Terminal label	Name	Terminal Fuction	Specification
Commu-nication	485+	RS485 communication connector	RS485 Positive end of differential signal	Standard RS485 communication connector, please use twisted-pair or shielding wire.
	485-		RS485 Negative end of differential signal	
Multi-functional output terminal	DO1	Open collector output terminal	Programmable logic is defined as a variety of functions of the output terminal, see the terminal function parameters F6.11/F6.12 output terminal function introduction (public end: COM)	Light isolated output Operating voltage range: 9-30V; maximum output current 50mA
	DO2	Open collector pulse output terminal		Operating voltage range: 9-30V; maximum output current 50mA; maximum output frequency: 50KHz (F6.20 decision)
Relay output terminal	TA TB TC	Programmable relay terminal output	Normally: TA-TB closed, TA-TC open; Programmable definition for a variety of functions of the relay output terminals (see parameter F6.13 function description)	Rated value of electric shock: NO: 3A 24VDC; 5A 250VAC NC: 3A 24VDC; 3A 250VAC
Analog input	AI1	Analog input AI1	Analog voltage input (Reference: GND)	Input voltage range: 1-10V (input impedance: 100KΩ) resolution ratio :1/1000
	AI2	Analog input AI2	Accept analog current and voltage input (Reference: GND)	Input voltage range: 1-10V (input impedance: 100KΩ) Input current range: 0-20mA (input impedance: 500Ω) resolution ratio :1/1000
Analog output	AO1 AO2	Analog output AO1 Analog output AO2	Provide analog voltage / current output, by jumper wire inserting J1 / selection, corresponding to 12 physical quantity, the factory default output frequency. (see parameter F6.24/F6.25 function description for details)	Voltage output range: 0-10V Current output range: 0-20mA
Multi-functional input terminal	DI1	Multi-functional input terminal 1	Programmable logic is defined as a variety of functions of the switch input terminals, see the sixth chapter terminal function parameters (input and output) input terminal function. (common end: PLC) (see parameter function F6.00-F6.07 description)	Isolated output Input impedance: 3.3kΩ Maximum input frequency: 200Hz Input voltage range: DC9-30V
	DI2	Multi-functional input terminal 2		
	DI3	Multi-functional input terminal 3		
	DI4	Multi-functional input terminal 4		Input impedance: 2kΩ Maximum input frequency: 100Hz (single phase), 50KHz (two-phase); Input voltage range: 15-30V
	DI5	Multi-functional input terminal 5		
	DI6	Multi-functional input terminal 6		
	DI7	Multi-functional input terminal 7		
	DI8	Multi-functional input terminal 8		
Power supply	10V	+10V Power supply	External supply +10V power	The maximum output current: 50mA
	GND	+10V Power public terminal	Analog signal and +10V power reference	COM and GND mutual internal isolation
	COM	+24V Power public terminal	Digital signal input output reference	
	+24V	+24V Power supply	Digital signal power supply	The maximum output current: 200mA
	PLC	Multi-functional input public terminal	D11-D18 public terminal	Ex factory with 24V short connection

GT210 High-performance universal frequency inverter

Product technical specifications

Item		Description
Input	Rated voltage/ Frequency	three-phase, 380V-440Vac; 50Hz/60Hz
	Allowed voltage range	Voltage: 380v(-15%)~440v (+10%); Voltage unbalance rate: <3%; Frequency: ±5%
Output	Rated voltage (V)	0~input voltage
	Frequency	0Hz~550Hz
Main control fution	Overload capacity	G type: 150% rated current for 60s; P type: 120% rated current for 60s
	Control mode	Magnetic field vector PWM modulation
	Range of speed regulation	1:100
	starting torque	150% rated torque when 0.5Hz
	Speed control accuracy	≤±5% rated synchronous speed
	Frequency accuracy	Digital set : max. frequency×±0.01% Analog set: max. frequency×±0.2%
	Frequency resolution	Digital set : 1Hz; Analog set: max. frequency×0.1%
	Torque rise	Auto torque ascension, manual torque ascension 0.1%~30.0%
	V/F curve	Four ways: 1 kind of user set V/F curve way, 3 kinds of drop torque characteristic curve way (2.0 times power, 1.7 times power, 1.2 times power)
	Acceleration/deceleration curve	Three ways: line acceleration/deceleration, S curve acceleration/deceleration and Auto acceleration/deceleration; four acceleration/deceleration time, with the unit of time (minute/second) optional, max. time set 60 hours
	DC braking	DC braking start frequency: 0.00Hz~60.00Hz; braking time: 0.0~30.0s; braking current: G type 0.0~100.0%; P type 0.0~80.0%
	Jogging	Jog frequency range: 0.00Hz~50.0Hz
	Multi-speed operating	It can be realized by interior-PLC or control terminal
	Built-in PID	Be convenient to make closed-loop control system
	Auto energy-saving running	According to load condition, V/F curve can be optimized automatically to get the aim of energy-saving running.
Customized function	Auto voltage adjustment	when the voltage of network changes, the output voltage can be automatically kept constant
	Auto current limiting	During the operation, the current is automatically limited to prevent frequent flow to fault trip
	Auto carrier adjustment	According to the load characteristics, automatically adjust the carrier frequency
	Textile swing frequency	Textile swing frequency control, it can realize the function of fixed and variable swing frequency
	Fixed length control	Length reached stop function
	Sagging function	Applicable to multiple inverters drive one load
	Instant stop/non-stop control	When power-supply off instantly, it can realize keep running through control bus voltage
	Binding function	Running command channel and frequency given channel can be binded and change at same time
	Running command channel	Operation panel, control terminal and communication port, can be switched through many ways
	Frequency given channel	Digital given, keypad potentiometer, analog voltage given, analog current given, pulse given, communication port given, can be switched through many ways
Running function	Auxiliary frequency given channel	Realize flexible auxiliary frequency fine-tuning and frequency combination operation
	Pulse output terminal	0~50KHz pulse square wave signal output, can realize output setting frequency and output frequency ect.
	Analog output terminal	2 ways analog output, 0~10v、0~20mA to get output of physical quantity such as setting frequency and output frequency
Operating panel	LED display	It can display 20 kinds of parameters such as setting frequency, output frequency, output voltage, output current and so on
	Key Locked and function choose protection function	Define the function scope of part of the keys, in case of mistake operation
Environ-ment	Service location	Phase-loss protection (optional), over current protection, over voltage protection, under voltage protection, over heat protection, over load protection
	Altitude	Indoor, not suffer from sun, dust, corrosive gas, oil fog, steam and so on
	Environment temperature	Less than 1000m (derating at higher than 1000m)
	Humidity	—10℃~+40℃
	Vibration	Less than 90%RH, no condensation
Structure	Storage temperature	Less than 5.9m/s ² (<0.6G)
	Protection class	—20℃~+60℃
	Cooling way	IP20 (In service state or keyboard state.)
Installation Way		Air-blast cooling
		Wall-hanging, Cabinet, Through wall installation

Overall dimension							
Series	Power	Overall dimension (Unit: MM)			Installation dimension (Unit: MM)		Remark
	KW	W	H	D	W1	H1	
GT210	5.5~7.5	150	259	183	138	248	5.5
	11~15	205	322	219	188	305	6.5
	18.5~22	235	370	237	218	350	7.0
	30~37	305	490	278	200	470	10
	45~75	320	560	308	197	535	10
	90~132	355	678	320	240	659	11
	160~185	450	900	378	300	875	12
	200~220	480	1070	424			
	250~280	520	1300	438			

GT230 Solar pump dedicated inverter

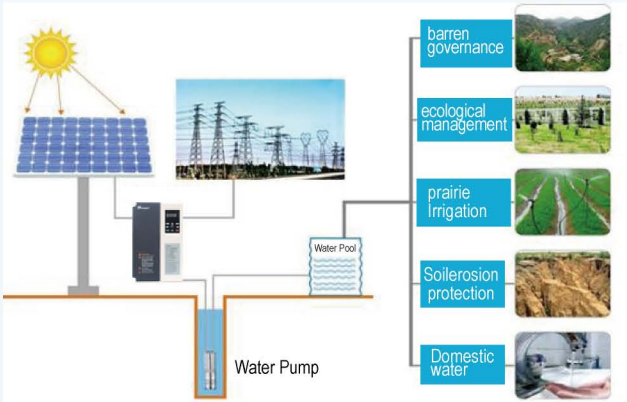


Power range

- GT230 5.5kW-22kW/DC350~750V

Product Feature

- Adjusting the output frequency in real-time according to the Sunlight intensity different, realize **Maximum** power point tracking;
- Adopt advanced solar power tracking control algorithm, fast response; adaptive confront weather changes, without human duty;
- With sleep in weak light, wake in strong light ,sleep in water high-level , alarm in underload situation and etc, photovoltaic pumps special features to ensure reliability;
- Be Compatible with DC and AC, two input methods, when insufficient solar energy, the drive can be switched to backup power, such as batteries or a generator;
- Recommended photovoltaic input bus voltage range: 350-750VDC
- Other characteristics parameters refer to GT210



Product Application

- Domestic water, irrigation, barren governance, fisheries aerobics, desalination and etc.

CV3100 Universal Vector frequency Inverter



Power Range

- CV3100 0.75-45kW/AC220V
- CV3100 0.75-630kW/AC380V

Product Characteristics

- Excellent performance
Optimized space voltage vector control algorithm:150% starting torque output at 0.5Hz
- Abundant Functions and Flexible Configuration
Built-in PID , Multi-speed(8 stages speed at most) ;Simple PLC
High speed Impulse input and output function
With built-in braking unit including and below 18.5kw, built-in standard MODBUS communication protocol.
Optional double analog (AO) output,LCD keyboard display , LCD keyboard upload and download.
- Excellent adaptability
All boards with "Comprehensive anti-corrosion paint" spraying protection to improve frequency inverter humidity-proof,dust-proof and Oil-proof capacity
Rich protect functions satisfy different environment adaptability, such as over voltage, under voltage, input phase-loss, overload, overheat, over current and etc.

Product Application

- Be applied to petrochemical industry, papermaking, plastics machines, ceramic machines,textile machines,printing and dyeing machines,packaging machines,cable-making machines,Mining machinery, petrochemical, Municipal project, water treatment, environment equipment, fans and pump and etc many kinds of industries.

CV3100 Universal Vector frequency Inverter

The main technical specification

Item	Specifications	
Input	Rated voltage andfrequency	Single-phase 220V, three-phase 220V, three-phase 380V; 50Hz/60Hz
	Grid range	Voltage: -20% ~ +20%
Output	Rated voltage	0~220V/0~380V
	Frequency range	0Hz~400Hz
Main control functio	Overload capability	M:150% for 1 min, 180% for 1s, 200% instant protection FP: 120% for 1 min, 150% for 1s, 180% instant protection
	Modulation mode	Space voltage vector PWM control ;
	Control mode	Sensorless vector control (SVC)
	Frequency accuracy	Digital setting: Max frequency ×±0. 01%,Analog setting: Max frequency ×±0. 2%
	Frequency resolution	Digital setting: 0.01Hz; Analog setting: Max frequency ×0.1%
	Starting Frequency	0.0Hz~10.00Hz
	Torque rise	Auto torque rise, manual torque rise 1%~30.0%(valid for V/F)
	V/F curve	Three ways: Linear V/F curve, square V/F curve, user self-defining V/F curve
	Acceleration/deceleration time	Optional time unit (Min/s), the longest: 3600s (settable in the range of 0.1~3600s).
	DC braking	Be optional during both starting and stopping, the operating frequency: 0~20Hz, operating time: settable within 0~30s
	Jogging	Jogging frequency range: 0.1Hz~50.00Hz;jogging acceleration and deceleration time: 0.1~3600s.
	Built-in PID	It is convenient for forming closed loop control system, applicable for course control like pressure and flow, etc.
	Multi-speed operating	Realize multi-speed running by built-in PLC or control terminal.
	Weaving wobble frequency	Can get wobble frequency of adjustable central frequency
	Auto voltage adjustment	When main voltage changes, the output voltage may be kept constant by adjusting PWM output (AVR function).
Sensorless vector control	Auto energy-saving running	According to load condition, V/F curve can be optimized automatically to get the aim of energy-saving running.
	Auto current limiting	Limit in-service current automatically, so as to avoid tripping for fault caused by frequent over current.
Running function	Torsion characteristic	150% output of torque at 1Hz, rev accuracy: 0.1%
	Motor parameters automatic read	Reading the parameters from motor when completely stop in order to achieve optimal controlling effect.
	Running command passage	Setting of operating manual; setting of control terminal; setting of serial port; switching by three ways.
	Frequency setting passage	Setting of keyboard analog potentiometer; setting of keyboard ▲、▼ keys; setting of functional code digits; setting of serial port, setting of terminal UP/DOWN, setting of analog voltage, setting of analog current; setting of impulse, setting of combination; switching at any time by kinds of setting ways.
	Switch input passage	Forward/reverse rotating command, 6-way programmable switching value input to set 30 functions.
	Analog input passage	2-way analog signal input, 0~20mA, 0~10V optional.
	Analog output passage	Analog signal output 0~10V 、 0~20mA to get output of physical quantity like frequency and output frequency
	Switch output passage	
	Operating panel	3-way programmable open collector output; 1-way relay output signal; can output different physical quantities.
	LED display	Display setting frequency, output voltage, and output current and so on.
Environment	Display external instrument	Display output frequency, output current, and output voltage and so on.
Operating panel		Over current protection, over voltage protection, under voltage protection, over heat protection, over load protection.
Environment		Braking unit, remote operating panel, remote cable, soleplate of keyboard.
	Service location	Indoors, not suffer from sun, dust, corrosive gas, oil fog, and steam and so on.
	Altitude	Shorter than 1000m (derating at higher than 1000m)
	Environment temperature	—10℃~+40℃
	Humidity	Less than 90%RH, no condensation
Structure	Vibration	Less than 5.9m/s2 (0.6M)
	Storage temperature	—20℃~+60℃
	Protection class	IP20 (In service state or keyboard state.)
Installation Way	Cooling way	Air-blast cooling
		Wall-hanging,Cabinet

CV3100 Universal Vector frequency Inverter

Overall dimension								
Series	Power	Overall dimension(Unit:MM)			Installation dimension (Unit:MM)		Aperture	Remark
	KW	W	H	D	W1	H1	R	
CV3100	0.75–4	132	232	162	120	218	2.5	Wall– mounted
	5.5–7.5	162.5	270	188.5	147	254	3	
	11–18.5	249	352	229	200	334	4.5	
	22–30	320	506	289	200	482	4.5	
	37–45	342	561	292	200	529	5.5	
	55–75	394	669	315	200	645	6	
	93–110	573	776	298	400	748	5	
	132–160	575	956	333	400	928	5	
	185–200	625	1101	358	480	1073	5	
	220–280	700	1100	446.5	500	1070	8	
	160–200	563	1265	481				Cabinet installation
	220–280	700	1566	407				
	315–400	850	1974	470.5				
	500–630	950	1974	490.5				

Options



MINI-S/L General Use Frequency Inverter



Power Range

- MINI-S 0.75KW—1.5KW/AC220V
- MINI-L 0.75KW—1.5KW/AC220V 0.75KW—2.2KW/AC380V

Product Feature

- Lead Control**
Built-in SVC vector control and V/F control model
Performance excellent: 150% rated Torque output at 1HZ
- Compact Structure**
High efficiency heat dissipation design, small size,narrow the design space of distribution cabinet
IPM intelligent power module integrated with the main circuit design
- Rich Functions**
Built-in PID, Multi-speed operation(8 stages speed operation),sample PLC
Built-in brake unit and Standard MODBUS communication protocol
High-speed pulse input and output function (MINI-S don't have pulse output)
Wide voltage range designed to meet the domestic low-voltage special occasions
Many Protection for over-current,over-voltage,over-load,over-heat, low-voltage,etc

Application

- Widely use for machines, textile industry, printing and dyeing,package,pharmacy,food, reflow and flow production line

MINI-S/L General Use Frequency Inverter

The main technical specification

Item		Standard
Input	Input Voltage	Single Phase 220V、Three Phase 380V; 50Hz/60Hz
	Voltage Fluctuation	Voltage: -20% ~ +20% Voltage unbalance rate: <3
Output	Rated Voltage	0~220V/0~380V
	Frequency Range	0Hz~400Hz
	Modulation Mode	Optimized spaced voltage vector PWM
Main Control Function	Control Model	Sensor-less vector control,V/F control
	Frequency Accuracy	Digital set: max frequency×±0. 01%;Analog set:max frequency×±0.2%
	FrequencyResolution	Digital set: 0.01Hz; Analog set:max frequency×0.1%
	Torque Rise	Auto torque rise; Manual torque rise 1%~30.0%(V/F model)
	V/F Curve	Linear V/F curve、Square V/F curve、 Customized V/F curve
	Built-in PID	Convenient to form close-loop control system,apply to pressure and flow control
	Multi-speed Operation	Realize 8 stages speed operation by built-in PLC or terminal combination
Sensor-less Vector	Torque Feature	150% output of torque at 1HZ,Speed stabilization accuracy 0.1%
	Motor ParametersAuto reading	Automatic read the motor parameters when the motor is perfectly still , to obtain the best control effect.
Operation Function	Running Command	Operation panel given; Control terminal given; Serial port given; 3 ways can switch
	Frequency Setting	Keyboard potentiometer setting▲▼; digital setting; Serial port setting; Terminal UP/DOWN,Analog signal setting,Combination given
	Switch Input	Forward/reverse command,6-way programmable switching value input to set30 functions
	Analog Input	2-way analog signal input, 0~20mA、 0~10V optional
	Analog Output	1-way analog output 0~10V、 0~20mA optional
Operate Panel	Switching Output	3-way programmable open collector output; 1-way relay out output signal
	LED Digital Display	Display output frequency、 output voltage、 output current and so on
Protection Function	Over-current protection,Over-voltage protection,Low-voltage protection Over-load prtction,Over-heat protection	

Overall dimension								
Series	Power	Overall dimension(Unit:MM)			Installation dimension (Unit:MM)		Aperture	Remark
	KW	W	H	D	W1	H1	R	
MINI-S(220V)	0.75-1.5	85	155	122	74	144	2.5	
MINI-L(220V)	0.75-1.5	98	175	152	89	166	2.5	
MINI-L(380V)	0.75-2.2							

Product application case

Easydrive 630kw inverter applied for sand pump



Easydrive 160kw inverters applied for circulating water pump



Easydrive 220kw inverters applied for steel mill



Product application case

Easydrive 500kw inverter applied for centrifugal fan



Easydrive 132kw inverter applied for air compressor



Easydrive 630kw inverters applied for drilling platform



Easydrive inverter applied for beam-pumping unit

