

Installation Instructions: MCD USB Module

Order Code: 175G9009

1. Important User Information

Observe all necessary safety precautions when controlling the soft starter remotely. Alert personnel that machinery may start without warning.

It is the installer's responsibility to follow all instructions in this manual and to follow correct electrical practice.

2. Introduction

The USB Module can be used in conjunction with WinMaster to manage Danfoss soft starters.

These instructions detail the installation, set-up and configuration of the USB Module. For details on using WinMaster, refer to the WinMaster help file.

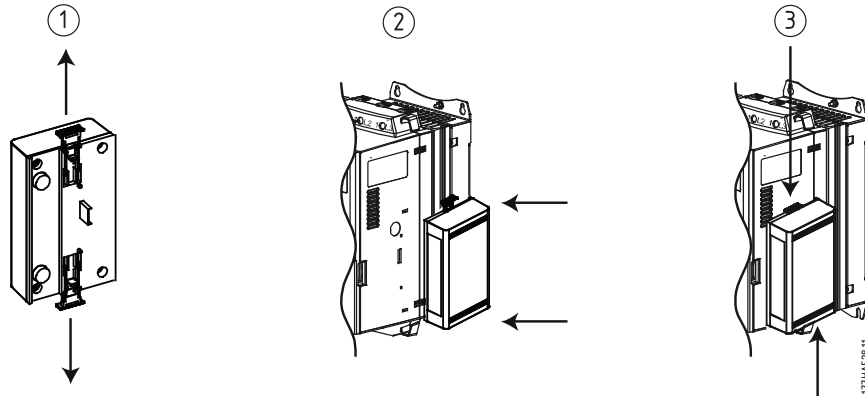
3. Installation



CAUTION

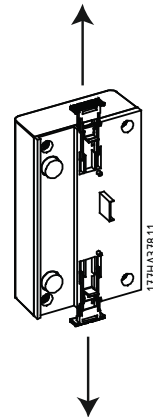
Remove mains and control voltage from the soft starter before attaching or removing accessories. Failure to do so may damage the equipment.

1. Fully pull out the top and bottom retaining clips on the module.
2. Line up the module with the comms port slot.
3. Push in the top and bottom retaining clips to secure the module to the starter.

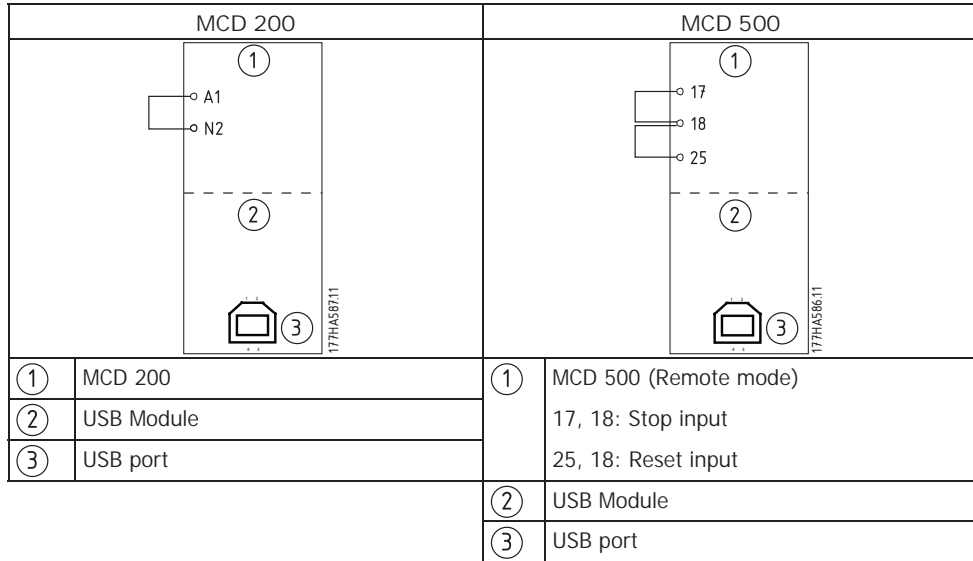


Remove the USB Module using the following procedure:

1. Remove control power and mains supply from the soft starter.
2. Disconnect all field wiring from the module.
3. Fully pull out the top and bottom retaining clips on the module.
4. Pull the module away from the soft starter.



4. Connection



For the USB Module to accept serial commands, a link must be fitted across terminals A1-N2 on MCD 200 starters.

Input links are required across terminals 17 and 25 to 18 if the MCD 500 soft starter is being operated in Remote mode. In Local mode, links are not required.



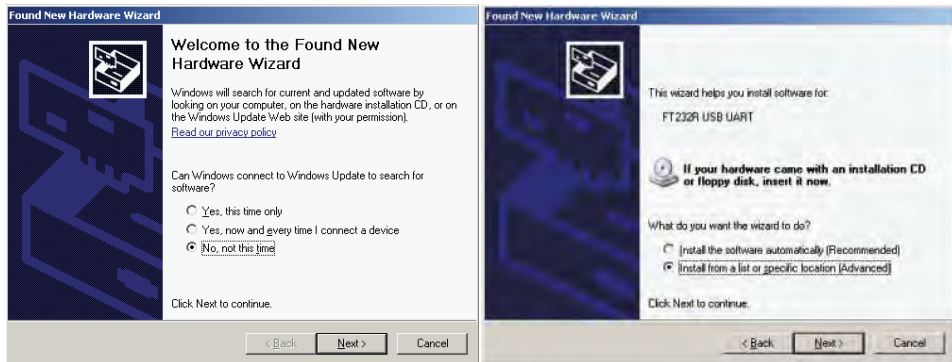
N.B.!
 MCD 500 parameter 3-2 *Comms in Remote* selects whether the soft starter will accept Start, Stop or Reset commands from the Serial Network Master while in Remote mode. See the MCD 500 User Manual for parameter details.

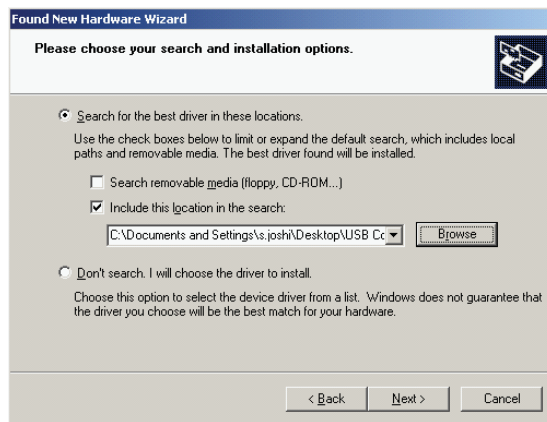
5. Configuration

To bring the USB Module on-line:

1. Remove control power and mains supply from the soft starter.
2. Attach the module to the soft starter as illustrated.
3. Connect the module to the PC via a USB cable. The PC should detect the module and the Hardware Update Wizard will open.
4. Install the USB driver to operate the module as follows.

The driver can be downloaded from www.danfoss.com/drives.





177HA589.10

Click on Ok, then Next. The software will install. If you see a prompt, click Continue Anyway. Once installation is complete, click Finish.

1. The PC will prompt you to install serial port driver software. Repeat the procedure in Step 4. You may need to restart your PC once the driver software is installed.
2. Identify the USB Serial Port assignment by checking Control panel > System > Hardware > Device Manager > Ports (COM & LPT).



177HA590.10



N.B.!:

If the USB port is not shown, disconnect then reconnect the cable. If the problem persists, restart your PC.

1. Open WinMaster and change the settings as follows:

Protocol:	MCD 200 = ASCII; MCD 500 = Binary
Baud rate:	9600
Address:	20
Port:	Use the serial port number identified above
2. Apply control voltage to the soft starter and bring the Master on-line.



N.B.!:

The starter may trip on Starter Comms while the Master is off-line. Reset the soft starter and place the Master on-line.



N.B.!:

The drivers will configure the USB port that the module is connected to. You must use the same physical USB port every time you connect the module to the PC.

6. Specifications

Enclosure	
Dimensions	40 mm (W) x 166 mm (H) x 90 mm (D)
Weight	250 g
Protection	IP20
Mounting	
Spring-action plastic mounting clips (x 2)	
Connections	
Soft starter	6-way pin assembly
Network	USB-B
Maximum cable length	3 metres (not supplied)
Settings	
Protocol	AP Binary or AP ASCII
Address	20
Data rate (bps)	9600